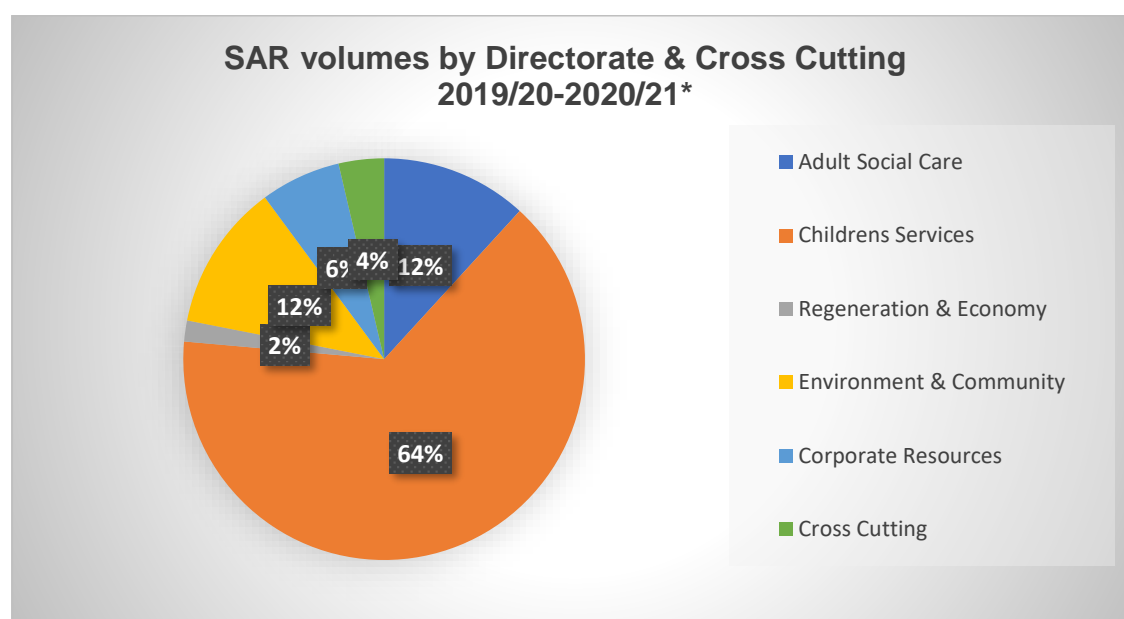


TABLE 5 – SUBJECT ACCESS REQUESTS BY SERVICE UNIT 2019/20-2020/21*

Requests by Service Unit	2019/2020	2020/2021*	2020/21 Projected	Total
Adult Social Care	24	15		39
Children's Social Care	116	127		243
Communities	8	8		16
Cross Cutting	6	8		14
Destination and culture	1			1
Environment	2	1		3
Growth and Infrastructure	5			5
Housing	12	9		21
Human resources	4	15		19
Inclusion family & learning	26	14		40
Law and Governance	1	1		2
Revenues & Benefits (SVPP)	2	1		3
Overall Total	207	199	264	

***to December 2020**



- Anticipated increase in SAR's between 2019/20 to 2020/21 based on average monthly volume of 22 requests per month, projected total of 264 for 2020/21
- The most significant percentage increase from 2019/20 to 2021 is within Human Resources
- The largest volumes of SAR's handled by BCP remain consistently within Children's Services